



ZEISS Loxia lenses

Compact lenses for mirrorless
full-frame system cameras
from Sony.



We make it visible.



The moment you experience
creative freedom.
This is the moment



// INSPIRATION
MADE BY ZEISS





enjoy full

ent we work for.



Enjoy classic photography with modern

technology. The lightweight Loxia® lenses from ZEISS give you the best of both worlds: the fantastic creative possibilities only available with manual focus and the benefits of modern, mirrorless, full-frame photography in the Sony α camera series. Let your creativity run free.





Loxia lenses from ZEISS are perfectly suited to the many strengths of Sony α series cameras. Add to that their compact size and low weight, and you have a series of lenses you can use just about anywhere for high quality photographs and films.

High precision

- Precise and durable construction, low weight
- The functionality of the ZEISS Loxia lenses is perfectly matched to the camera functions of the Sony α series





Perfect for photography and video

- High quality images thanks to proven optical design
- Automatic activation of the magnification function when turning the focus ring
- Optional switchable aperture lock, allowing for smooth adjustment in video mode
- Large focus rotation angle for the entire lens family

High quality construction

- Robust, all-metal construction for many years of use
- Easy-grip focus ring for fine manual adjustment
- A special gasket on the mount protects the connection between camera and lens
- Comes standard with a matching lens shade



Photo: Björn Pados, ZEISS Loxia 2.8/21







Photo Christophe Casenave, ZEISS Loxia 2.8/21



ZEISS Loxia 2.8/21

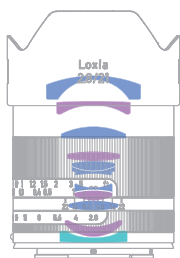
Compact and wide-angle in one. Whether architecture, landscape or also three-dimensional subjects in close-up against a spacious background – the ZEISS Loxia 2.8/21 is an absolute must for wide-angle fans who want to capture even the tiniest details of a special moment in a photo or on film.





Focal length	21 mm
Aperture range	f/2.8–f/22
Elements/groups	11/9
Focusing range m/ft	0.25–∞/0.82–∞
Field angle* (diag./horiz./vert.)	91°/81°/59°
Coverage** mm/inch	281 x 187/11.06 x 7.36
Compatible with	Sony E mount cameras***

*Based on 35 mm format. **At close range. ***Sony is a registered trademark of Sony Corporation.



Design

- Distagon® with 11 elements in 9 groups
- Lens made of special glass with anomalous partial dispersion
- Lens with aspheric surface





Photo: Arato Ogura, ZEISS Loxia 2/35







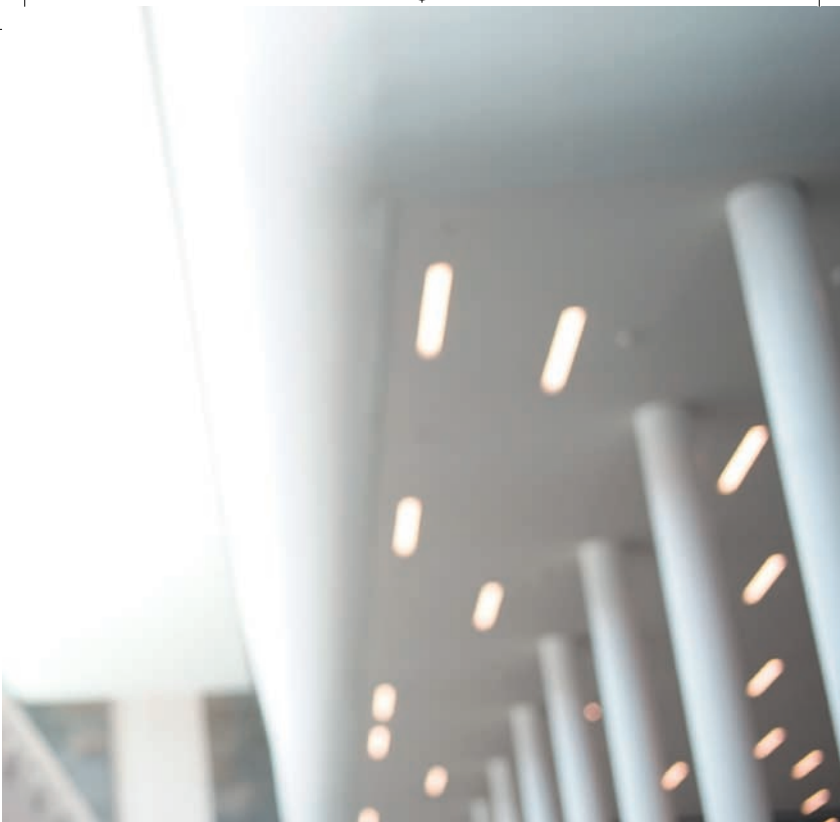
Photo: Tobias Brandstetter, ZEISS Loxia 2/35



ZEISS Loxia 2/35

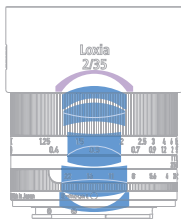
The subtle reporter. An extended field of view makes this versatile lens ideal for showing a subject in their environment. It's also just as good for reportage and street photography or even for portraits, detail shots and landscapes.





Focal length	35 mm
Aperture range	f/2.0–f/22
Elements/groups	9/6
Focusing range m/ft	0.30–∞/0.98–∞
Field angle* (diag./horiz./vert.)	63°/54°/37°
Coverage** mm/inch	210 x 139/8.27 x 5.47
Compatible with	Sony E mount cameras***

*Based on 35 mm format. **At close range. ***Sony is a registered trademark of Sony Corporation.



Design

- Biogon® with 9 lens elements in 6 groups
- Lens made of special glass with anomalous partial dispersion



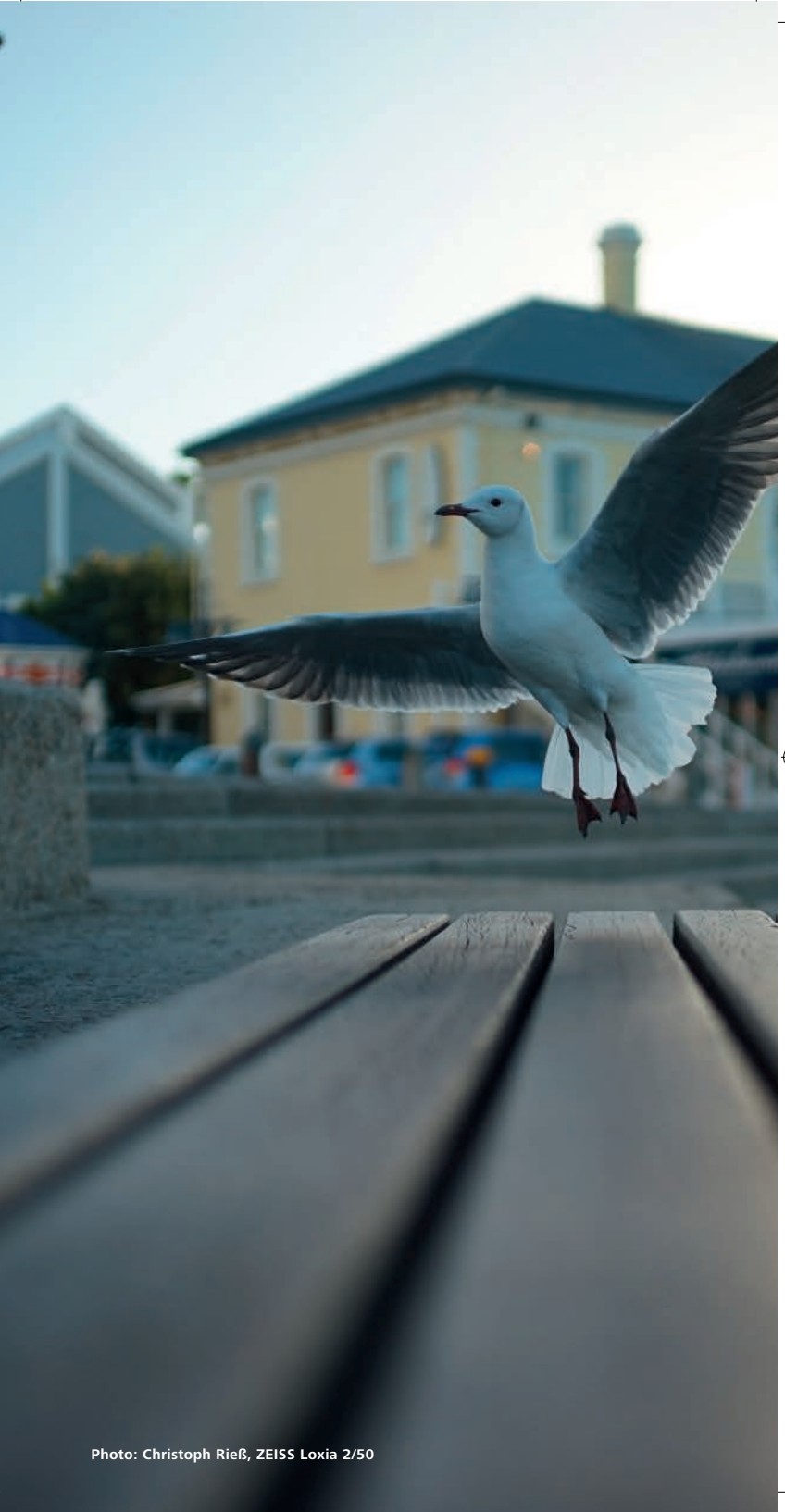
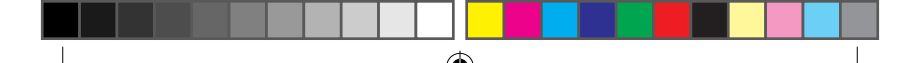


Photo: Christoph Rieß, ZEISS Loxia 2/50





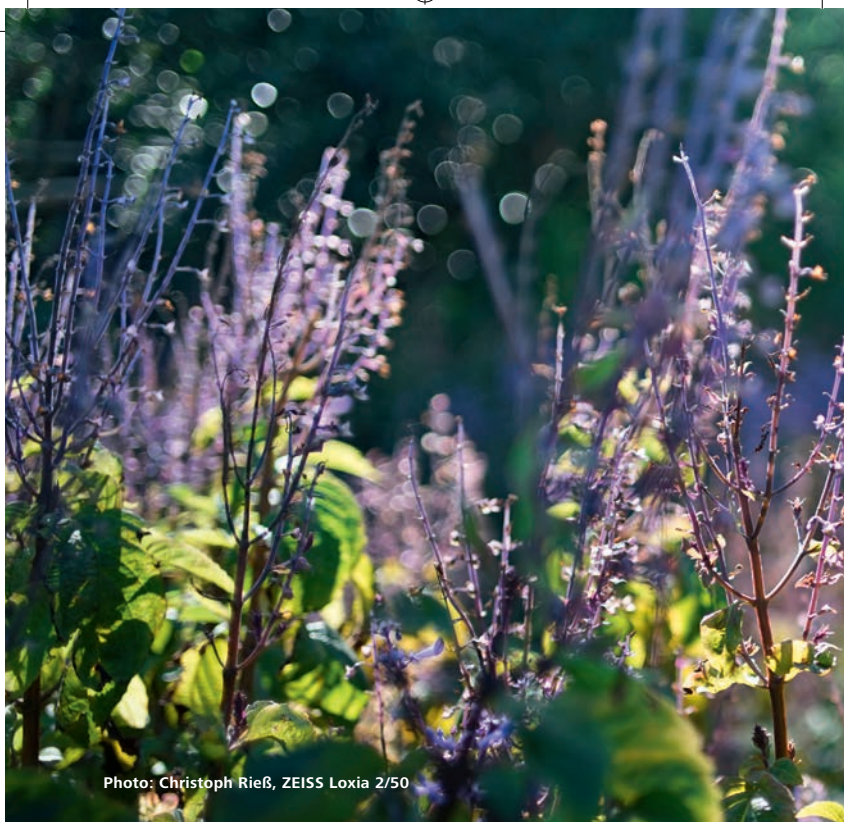


Photo: Christoph Rieß, ZEISS Loxia 2/50



ZEISS Loxia 2/50

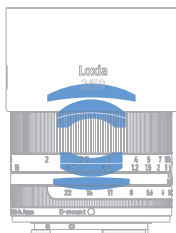
The flexible all-rounder. Compact and light, this lens shines in many applications. Regardless of whether it's for street photography, landscapes, portraits or spontaneous discoveries, the ZEISS Loxia 2/50 is the ideal companion for photographic and filmic exploration.





Focal length	50 mm
Aperture range	f/2.0–f/22
Elements/groups	6/4
Focusing range m/ft	0.45–∞/1.48–∞
Field angle* (diag./horiz./vert.)	47°/39°/27°
Coverage** mm/inch	255 x 168/10.04 x 6.61
Compatible with	Sony E mount cameras***

*Based on 35 mm format. **At close range. ***Sony is a registered trademark of Sony Corporation.



Design

- Planar® with 6 lens elements in 4 groups





Technical specifications. How large, how heavy, available with which mounts? All the technical information you need is here. For more information, visit zeiss.com/photo

	Length* mm/inch	Diameter mm/inch (max.)
Super wide angle		
Loxia 2.8/21	85/3.35	62.1/2.44
Wide angle		
Loxia 2/35	66/2.6	62.1/2.44
Standard		
Loxia 2/50	66.2/2.6	62.1/2.44

*Length with caps.





Weight g/oz.	Filter thread	E
394/13.90	M 52 x 0,75	■
340/12	M 52 x 0.75	■
320/11.29	M 52 x 0.75	■



Original accessories and care products from ZEISS

This puts the perfect finishing touch to the unique product experience offered by the ZEISS lenses.



ZEISS Lens Cleaning Kit

The ZEISS Lens Cleaning Kit is packed in a fabric belt bag and contains:

- Lens cleaning solution
- Dust brush
- Microfibre cloth
- 10 moist wipes
- User manual for professional lens care
- Air blower

Application notes at: zeiss.com/photo/cleaning



ZEISS T* UV filters and POL filters (circular)

These filters with T* antireflective coating optimally protect your front lens. The UV filters give your pictures more brilliance, and the POL filters reduce reflections on non-metallic surfaces and increase color saturation.

- High fit accuracy for fast filter change
- Can be used with a lens shade
- Available in all standard sizes



ZEISS Air Cell comfort camera strap

With patented Air Cell padding, this camera strap minimizes shoulder and neck strain, even with heavy equipment.

- High degree of wearing comfort with Air Cell padding
- Strap length adjustable at both ends





Photo: Christoph Rieß, ZEISS Loxia 2/50



Share your fascination – together with others.

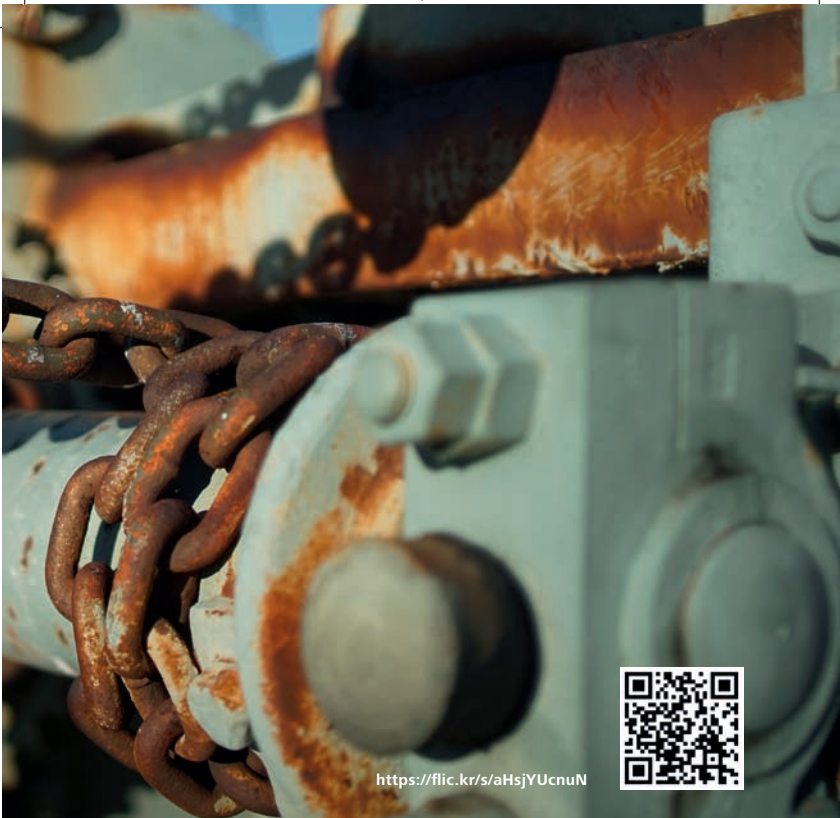
Visit ZEISS online to stay in touch with other photographers, exchange tips and tricks and get regular news updates. On our blog, Facebook, Twitter, Flickr and Vimeo sites, you can find a large community of photographers and videographers from all over the world. We look forward to seeing you there!



Become part of the ZEISS community:

zeiss.com/photo/social





<https://flic.kr/s/aHsjYUcnuN>



Experience the ZEISS lenses at your camera dealer:

zeiss.com/photo/dealer

See our LENSPIRE photography platform for exciting everyday stories from photographers and discover how they rise to the many challenges they encounter by using ZEISS lenses. **lenspire.zeiss.com**



Download the **ZEISS Lens Catalog** in the app store and discover the quality and technical excellence of ZEISS camera lenses.





Carl Zeiss AG

Camera Lenses
73446 Oberkochen
Germany

Phone: +49 7364 20-6175
Fax: +49 7364 20-4045
Email: photo@zeiss.de

www.zeiss.com/photo

EN_10_025_0152II

Subject to change in design and scope of delivery and as a result of ongoing technical development.

